

MUJI

MUJI OFFICE

- **Project Type:**

Muji's **elegant** office that uses **eco-friendly** and organic material includes a studio that revives minimalism but high quality in the products with Muji's mission. A high-quality setting with an engaging workstation and a basic style. A large workstation with elements of nature, such as plants.

- **Project Objectives:**

Is to create an elegant workspace that complements the brand's minimalist aesthetic while also introducing a beautiful and flexible workspace. The brand is also focusing on eco-friendly aspect.

- **Project Target Market:**

A place where workers often interact. Only pure and fresh products are sold at Muji, therefore, eco-friendly materials are being chosen.

- **About Muji:**

The Muji office functions as a showcase for the company's goods. Although Muji's goods are affordable, they are made of high-quality materials and have simple packaging.

Number of employees: 41



Eco-friendly material



Eco-friendly poster



Eco-friendly products



Building and Context Description

- **Location:**

3550 Rue Saint-Antoine O, Montréal, QC. It is located in the heart of Montreal. It takes 6 minutes to reach the building via the Lionel-Groulx metro station

- **When:**

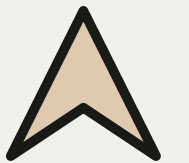
Was built in **1935** and restored in **2009**

- **Building characteristic:**

This is an art gallery in Montreal occupies a former commercial laundry building that dates from the early 1930s. This is a 2-storey building with the total area for leasing of 15 000 square feet. The building operated in the location for over 50 years but the last renovation was in 2009

- **Why:**

Lionel Groulx is a popular area in Montreal for offices and commercial uses. Therefore, choosing this location will benefit the employees and the company



Lionel Groulx, 6 minutes walking



Bixi station at Lionel Groulx station



MUJI
無印良品

Three Principle In Manufacturing of MUJI

MUJI

- 1 Selection of Materials**
- 2 Sustainable thought and products**
- 3 Streamlining processes**
- 4 Simplification of packaging**

GROUND FLOOR FLOOR PLAN



F
L
O
O
R

M
A
T
E
R
I
A
L

G
R
O
U
N
D
F
L
O
O
R



MUJI
無印良品

FIRST FLOOR FLOOR PLAN



F
L
O
O
R

M
A
T
E
R
I
A
L

F
I
R
S
T
F
L
O
O
R

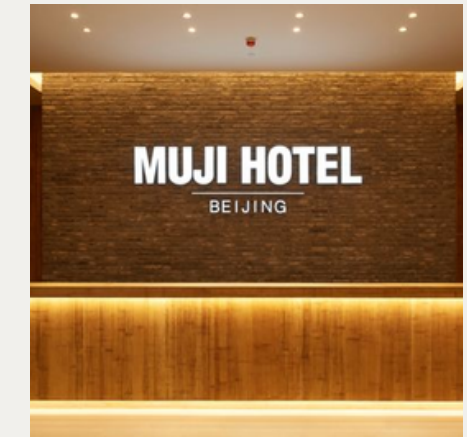


MUJI
無印良品

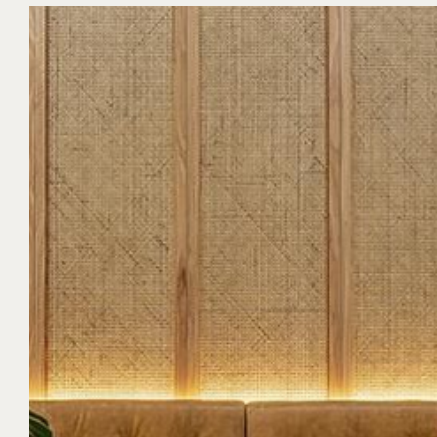
GROUND FLOOR-RECEPTION



Paper Lantern
Pendant Light



Muji Hotel
Reception Desk



Rattan Cane
Ceiling



Rattan Cane
Ceiling

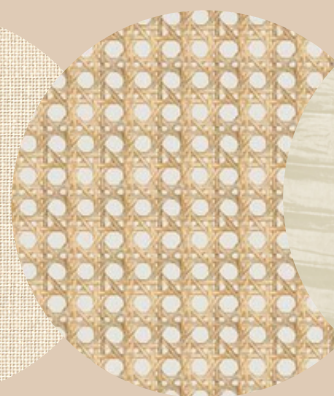
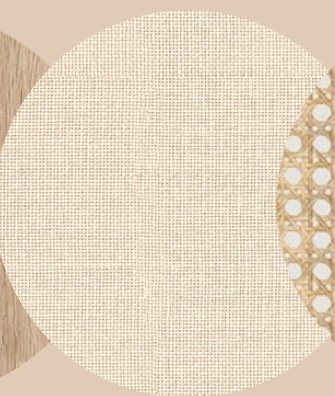
Furniture

Shoji

Ceiling

Light

Floor

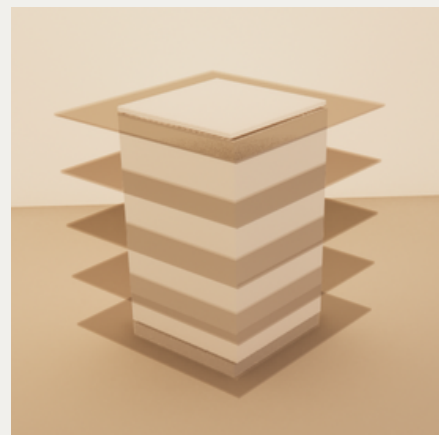
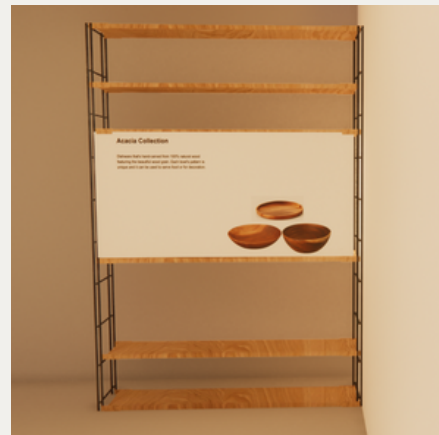
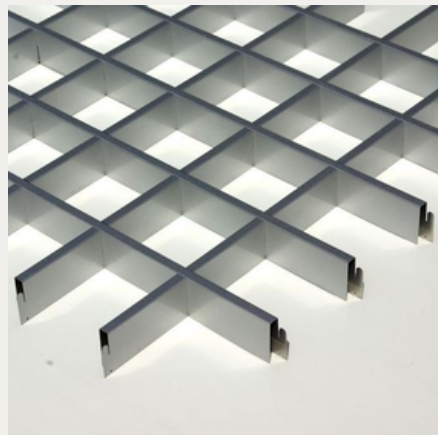


From the entrance, where the reception is located, **NEUTRAL COLORS** and **SUSTAINABLE** materials are being chosen to create a welcoming feeling toward the clients

MUJI
無印良品



GROUND FLOOR-DISPLAY



Muji is known for their **QUALITY** materials and **SUSTAINABLE** products, therefore, the materials in the display area are mostly **WOOD** and **RATTAN**.

Display area **REPRESENTS** the actual Muji store

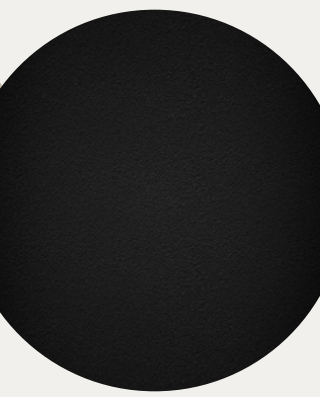
Furniture

Shoji

Furniturex2

Floor x2

Ceiling



MUJI
無印良品



GROUND FLOOR-WORKING STATION AND NON-ASSIGNED



A non-assigned work station is situated near to the workspace to change the environment at work and to motivate, encourage employees

Furniture

Shoji

Light

Furniture

Upholstery

Floorx2

Stool



GROUND FLOOR-BISTRO AND TEA ROOM



For diversity and comfort for both employees and clients, the area includes both cushion and high stool seating

Floor Counter Furniture Light Floor Upholstery

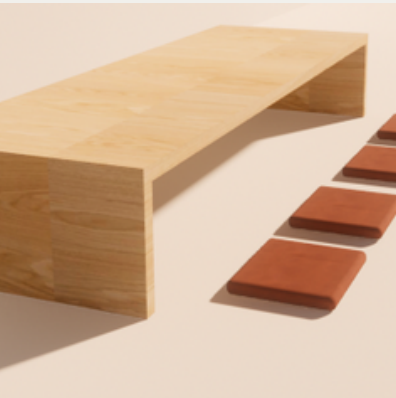


FIRST FLOOR-TEA/ MEETING ROOM



Chashitsu room is designed for **GATHERING** and ceremony purposes, It applies to both clients and employees

Floor Wall Light Shoji Counter Cushion

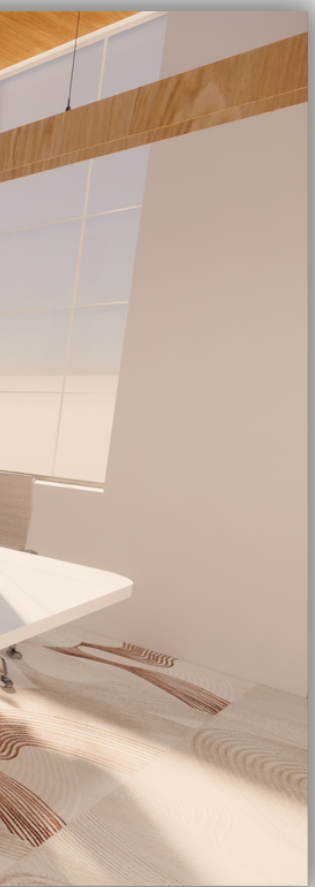


FIRST FLOOR-WORKING STATION (IT AND PRODUCT DESIGN)



A meeting table next to a potted tree to encourage **INTERACTION** and create space for thinking and work outside of the office.

Floor Furniture Lighting

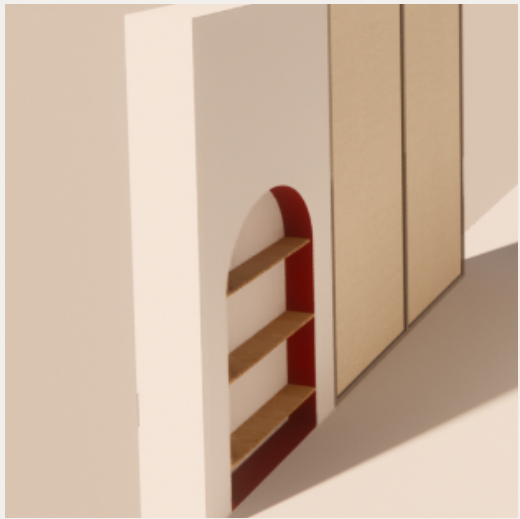
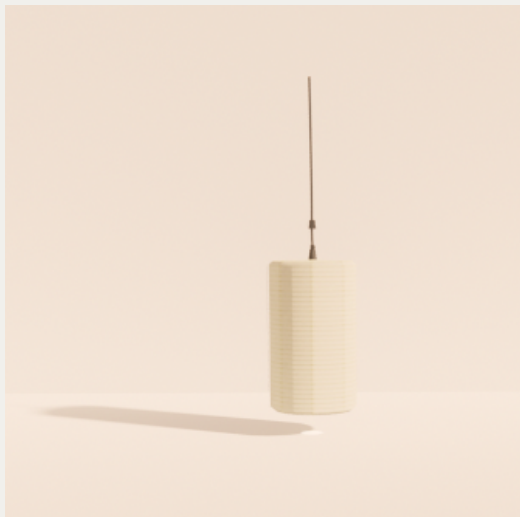


FIRST FLOOR PRESIDENT



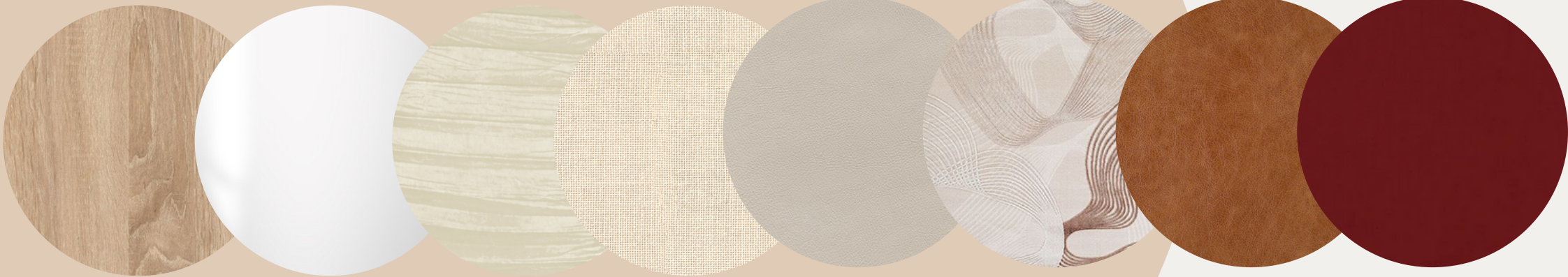
The president room is situated at the corner of the building where **MOST NATURAL** light is coming in

There is a meeting table for private meetings with clients

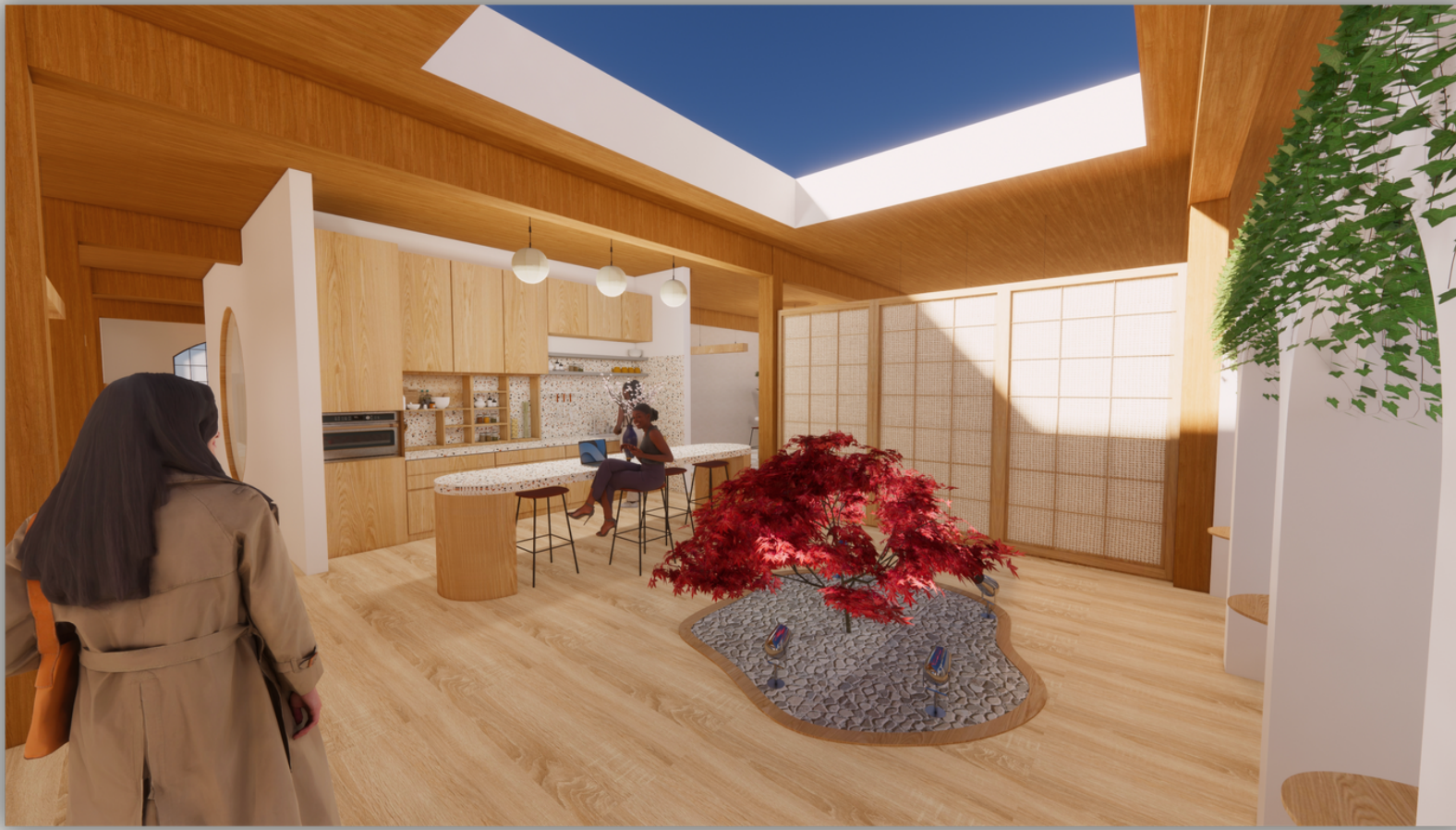


Furniturex2

Light Shoji Upholstery Floor Upholstery Shelve



FIRST FLOOR LUNCH AREA



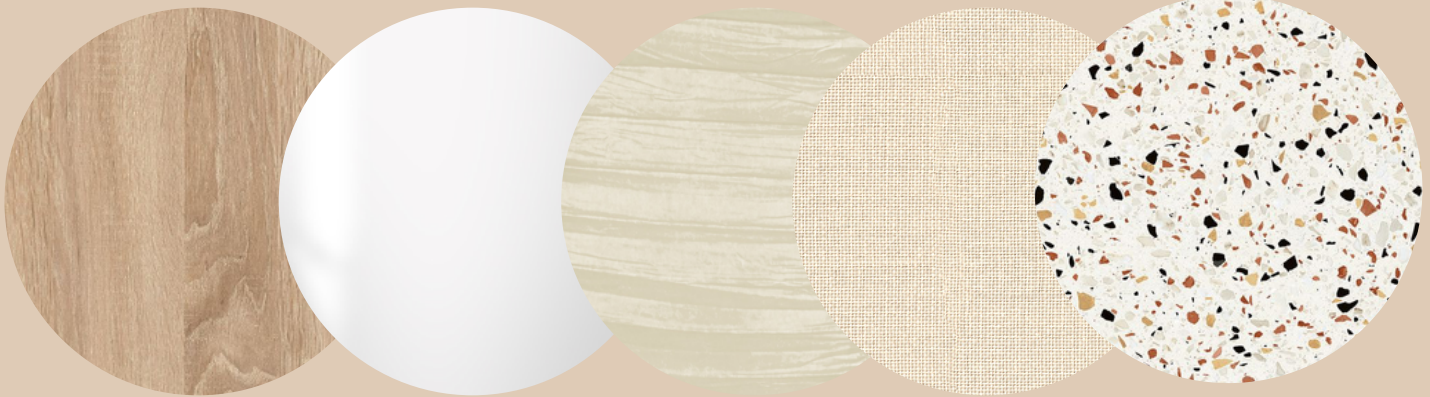
Wood material for flooring and furniture to continue with Muji concept which is **SUSTAINABLE MATERIAL** and create a welcoming atmosphere to the space

Furniturex2

Light

Shoji

Counter



MUJI
無印良品



SECTION CUT 1-BREWSTER AVENUE (EAST SIDE)

HR and
Operation

Meeting
Area

1st floor
waiting area



Accounting
and Finances

Merchandise
and Sales

Waiting
Area



SECTION CUT 2-BEL-AIR STREET (WEST)

President

Vice President

Washroom



Conference

Display

Bistro

Chashitsu

