

DIVE into YOU is a medium size (12,655 sqft.) aquarium  
our mission is to provide the visitors an engaging, interactive and educational experience.

It's a place to have enjoyable moment, create memorable experience with friends and family & diversity of aquatic species from Oceans around the continent of North America



# DIVE *into* YOU

## Ocean species

- North: Arctic Ocean
- West: Caribbean Sea
- South: North Pacific Ocean
- East: North Atlantic Ocean



## Site location:

**Arsenal art contemporain Montreal** (Partial of the building in southwest direction)  
2020 Rue William

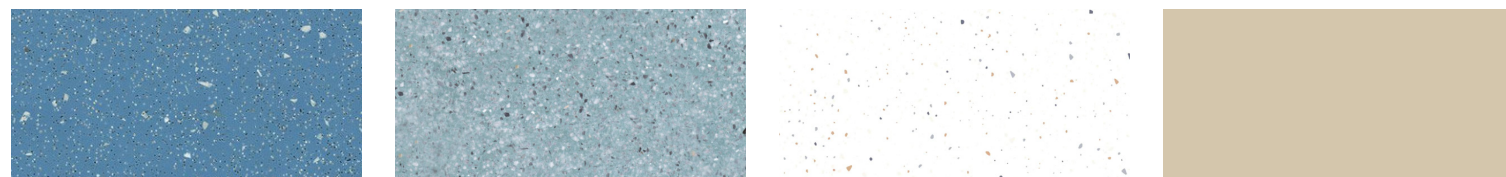
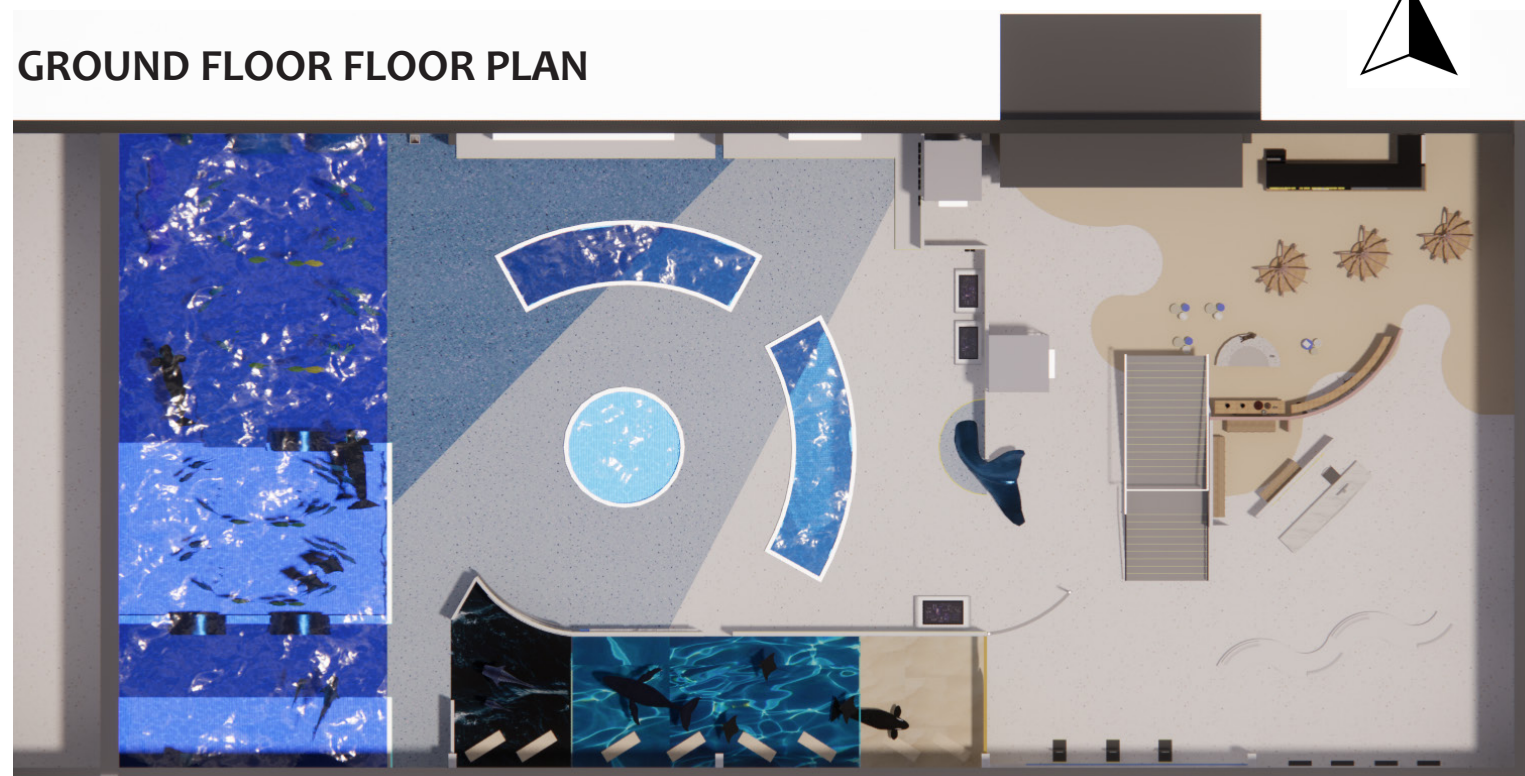
## Design goal:

**Designed to allow users to have an engaging interactive and educational aquarium experience**

## Stand-outs:

**fun, romantic designs: welcoming & encouraging environment**  
**this stylish aquarium will always gives a memorable experience to its visitors**

## GROUND FLOOR FLOOR PLAN



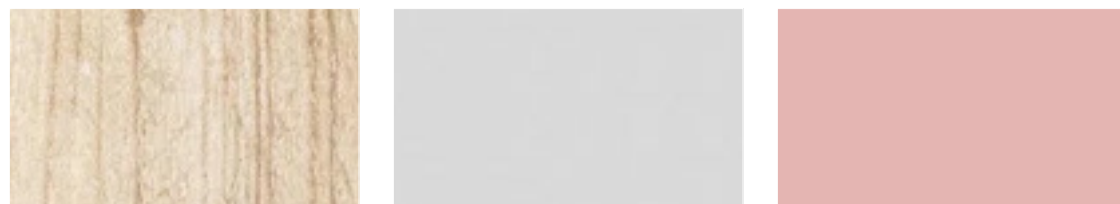
### Floor material selection: Vinyl flooring

Acoustical, non-slip & easy installation with curve design

Floor design and materials to mimic the situation of sand to ocean



### Wall & furniture



### LED downlights:

- 4 headed track lights
- 16" curve track light (souvenir shop)
- ceiling integrated LED downlights



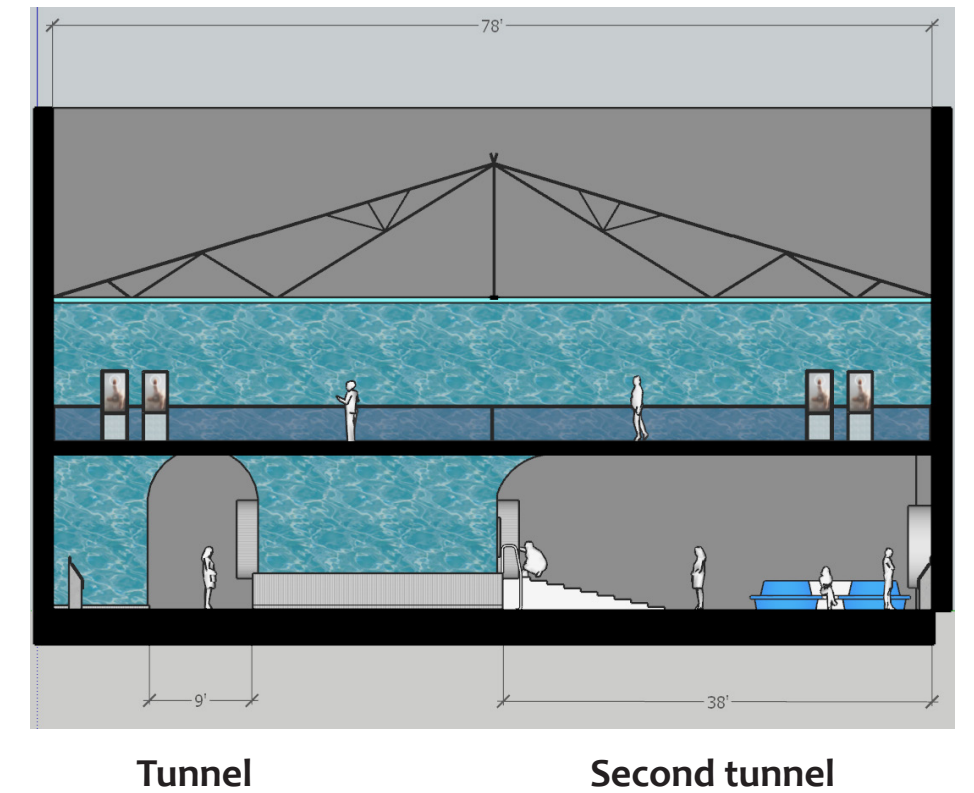
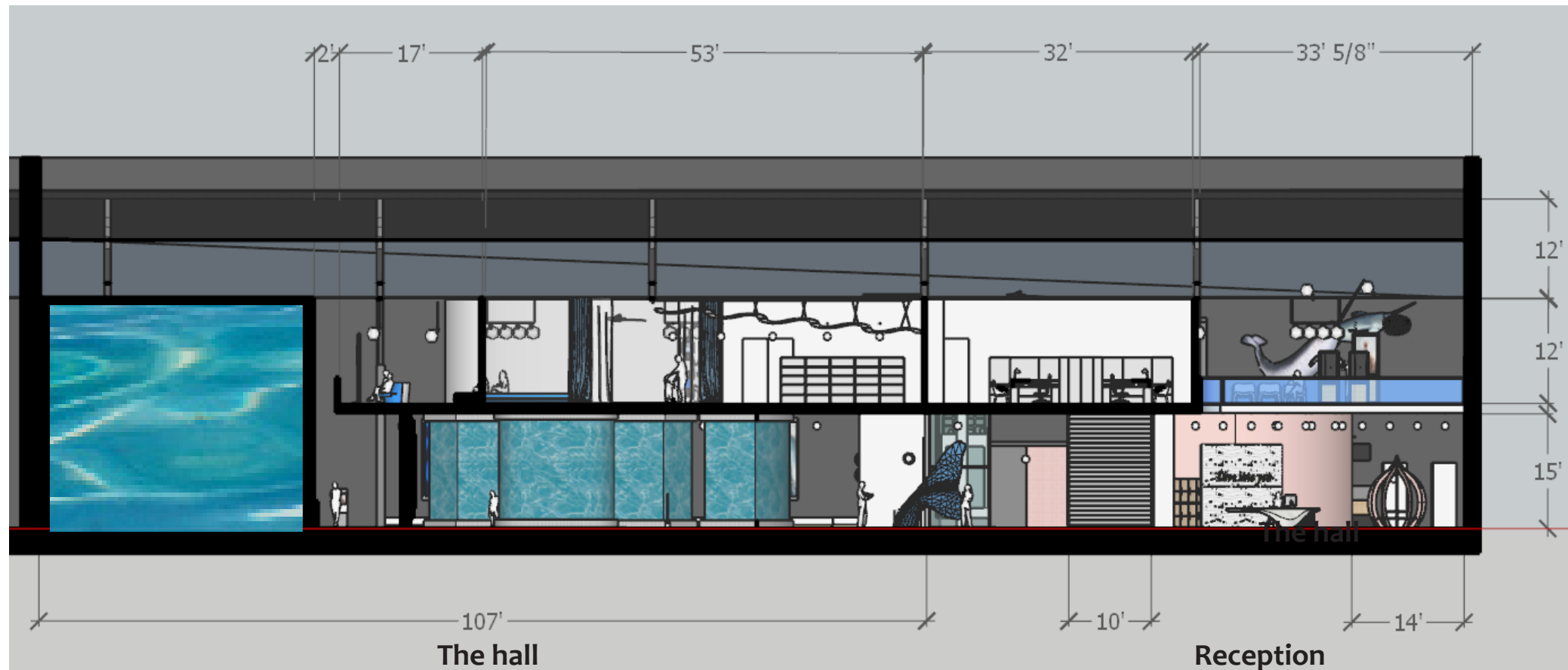
## GROUND FLOOR REFLECTED CLG PLAN



OPEN TO ABOVE



## SECTION ELEVATIONS

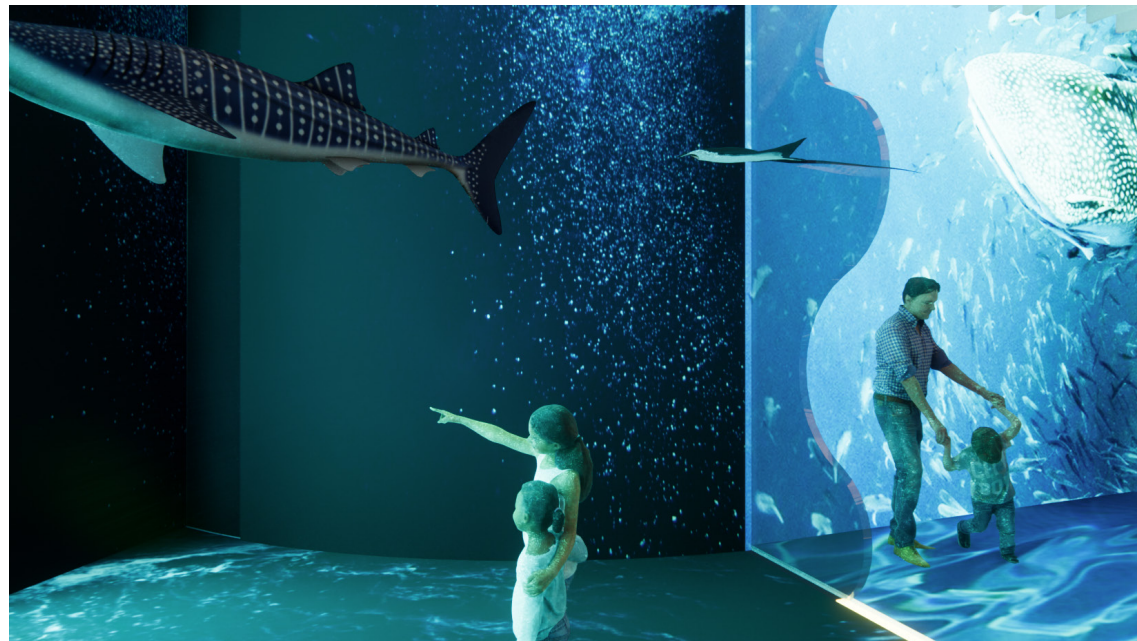




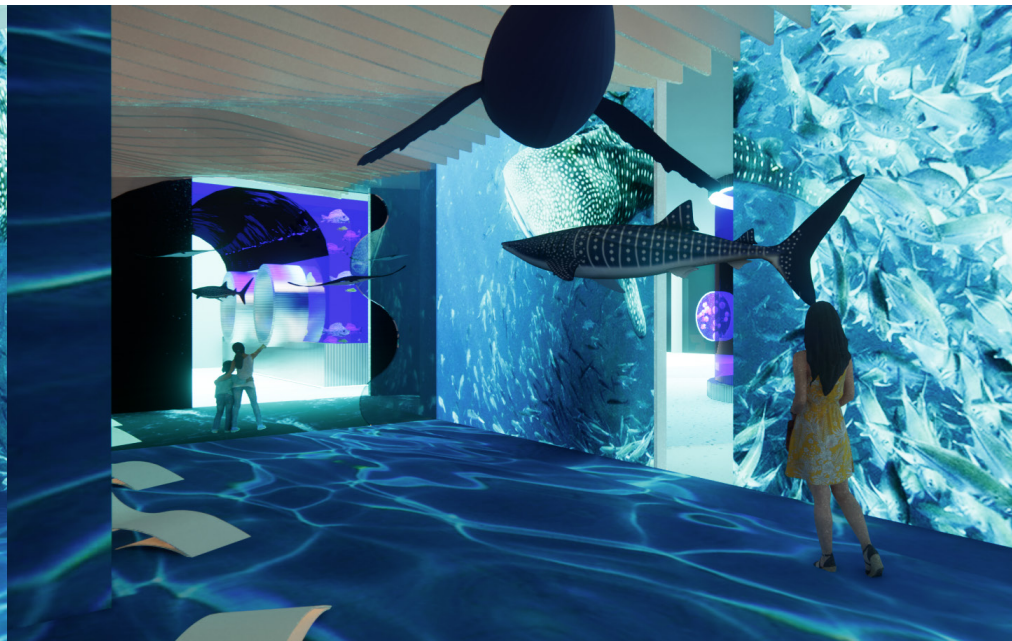
## ENTRANCE PERSPECTIVE

Light, clean colour palette to welcome the visitors with a professional image immersive pavilion using the "sunshine" colour as an eye catching design feature to guide people in as the ideal first visit point

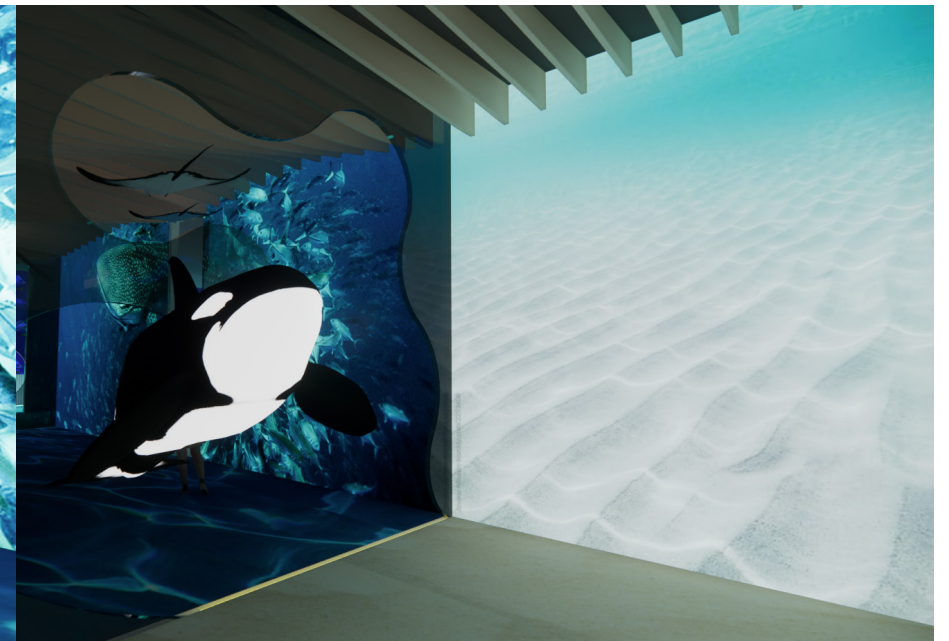
**OCEANIC ZONE**



**NERITIC ZONE**

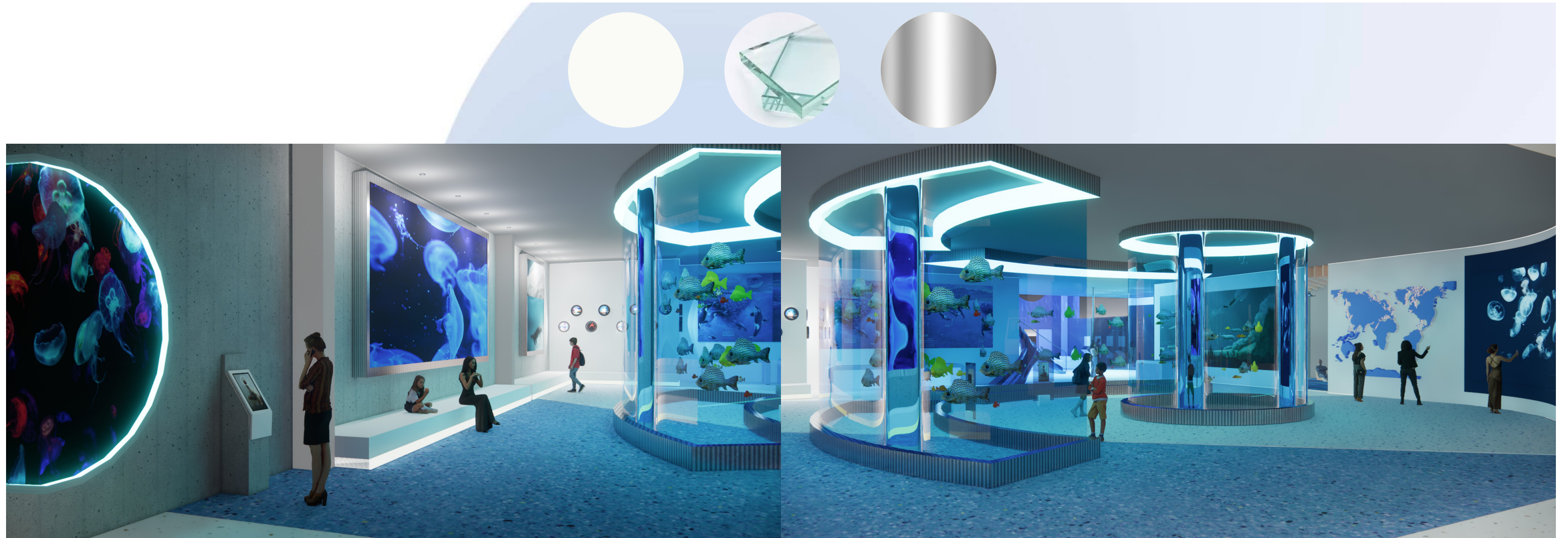


**INTERTIDAL ZONE**



**IMMERSIVE PAVILION**

**Installations: LED boards & water projection offering the visitors a wonderful immersive experience with large scaled pendants, realistic sound & ocean life animations**



## THE HALL

Curved & cylinder tanks create a circular path for people to visit wall tanks and information stands, touch screens & stations offering an easy service to get informations about the ocean lives



**DIVE INTO YOU LAND MARK - CRYSTAL WHALE TAIL**

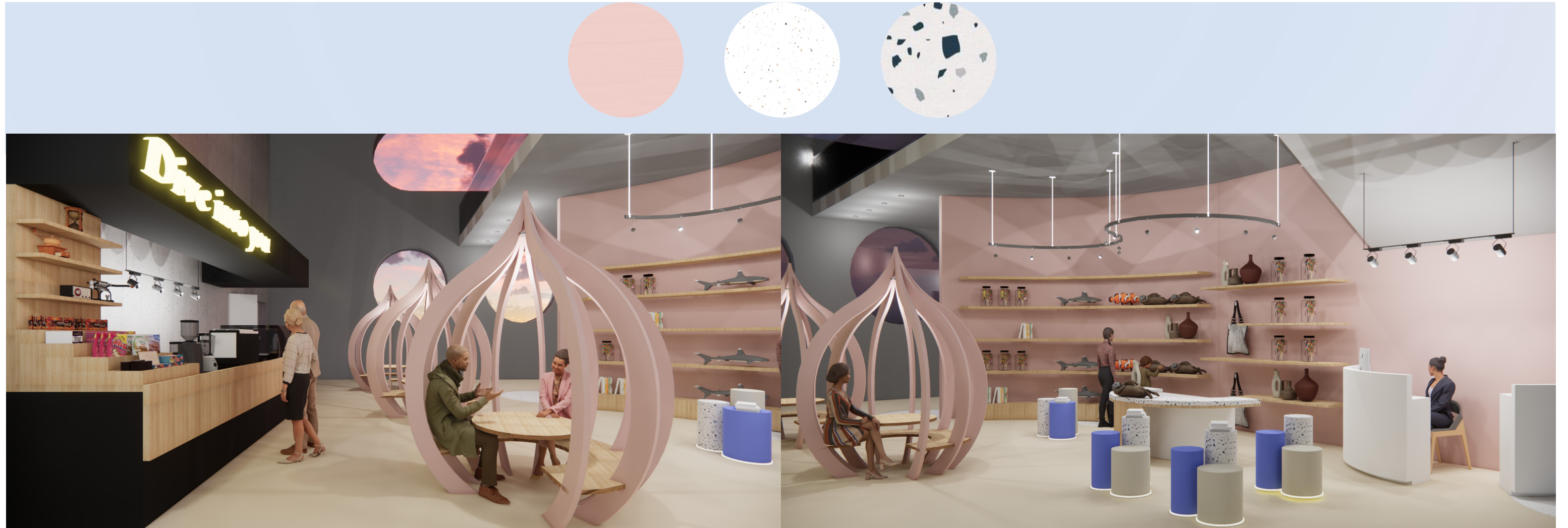
**WALL DESIGNS:**

Information station with the touch screen & boards providing useful informations for visitors to read ; small wall installations are about informations of the corals

**UNDER THE WALL TANK**

Rounded window tanks with climb bar to stand and peek into the tank & stt "into" the tank to have a better experience viewing





## CAFE

Cafe and souvenir near the exit offering a resting & gathering space to have food and picking gifts for friends and family to finish up the interesting journey

## SOUVENIR SHOP

The color palette of the souvenir shop is to create a pink beach vibe, where visitors will have a surprise looking at and leave a great memory in this aquarium

terrazzo laminate use on the tables are to imitate the feel of shells left on the beach

# DIVE into YOU

SOFT ON EYE COLORS  
CALM & FUN



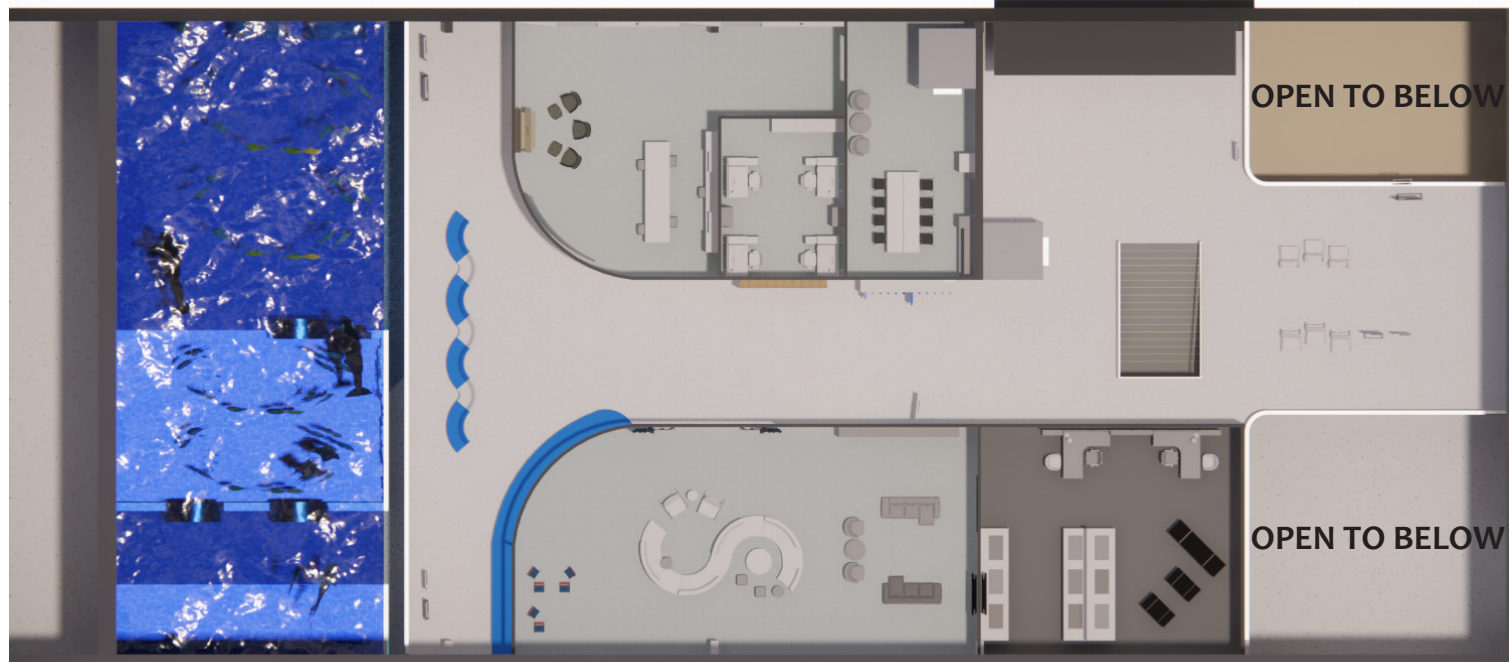
LED downlights:

4 headed track lights  
&  
ceiling integrated LED downlights



CEILING HEIGHT: 12'-0" A.F.F.  
OPEN TO ABOVE

FIRST FLOOR FLOOR PLAN



FIRST FLOOR REFLECTED CLG PLAN



Floor material selection: Vinyl flooring  
Acoustical, non-slip & easy installation with curve design



Wall & furniture



WAVE ACOUSTICAL SUSPENDED CEILING



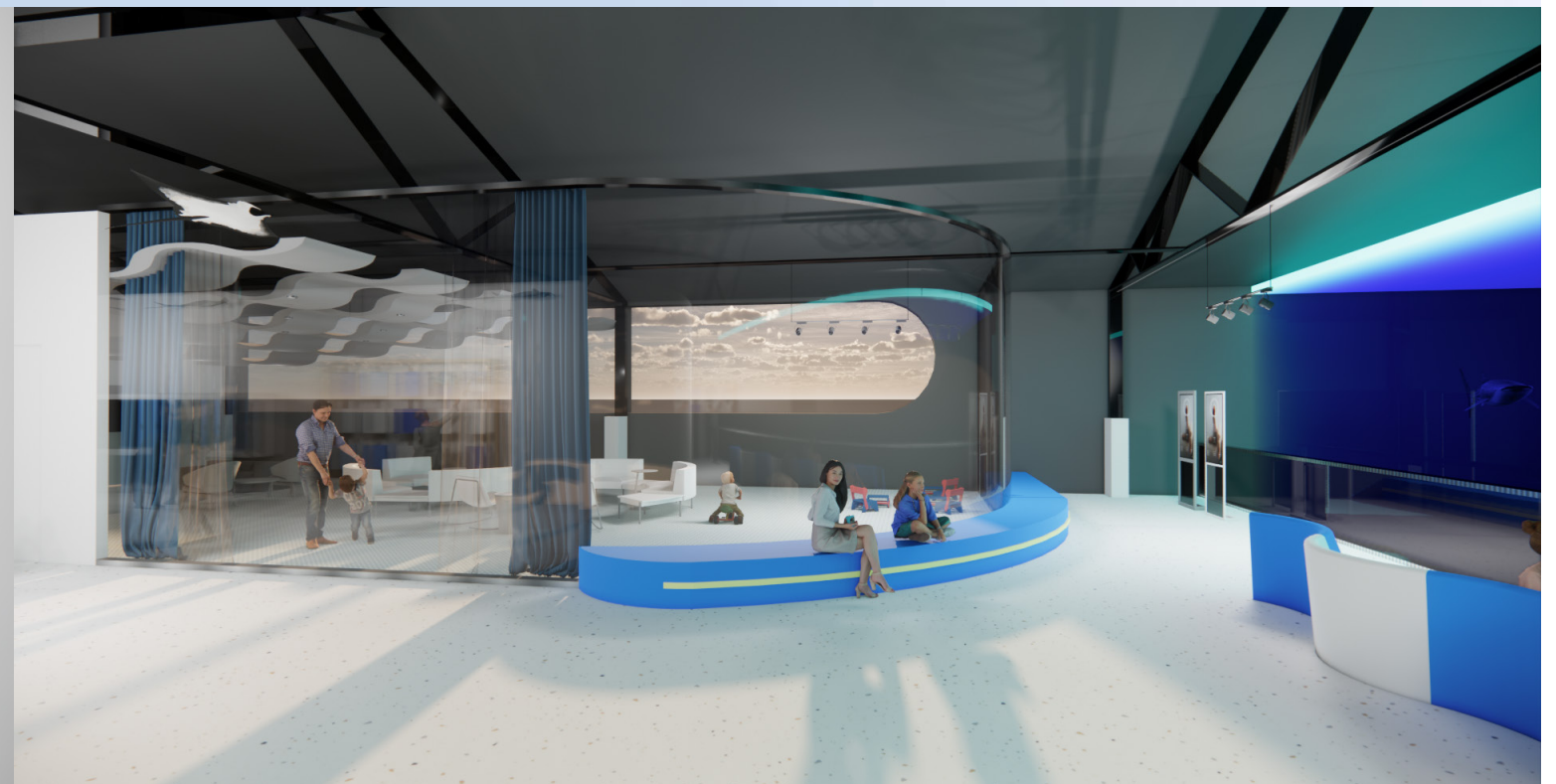
## THE BRIDGE

The bridge is one of the focal point of DIVE INTO YOU, it is designed with large scaled ocean life figures on both sides of the bridge with information boards to explain about each creature. Visitors can also see the figures from the ground level



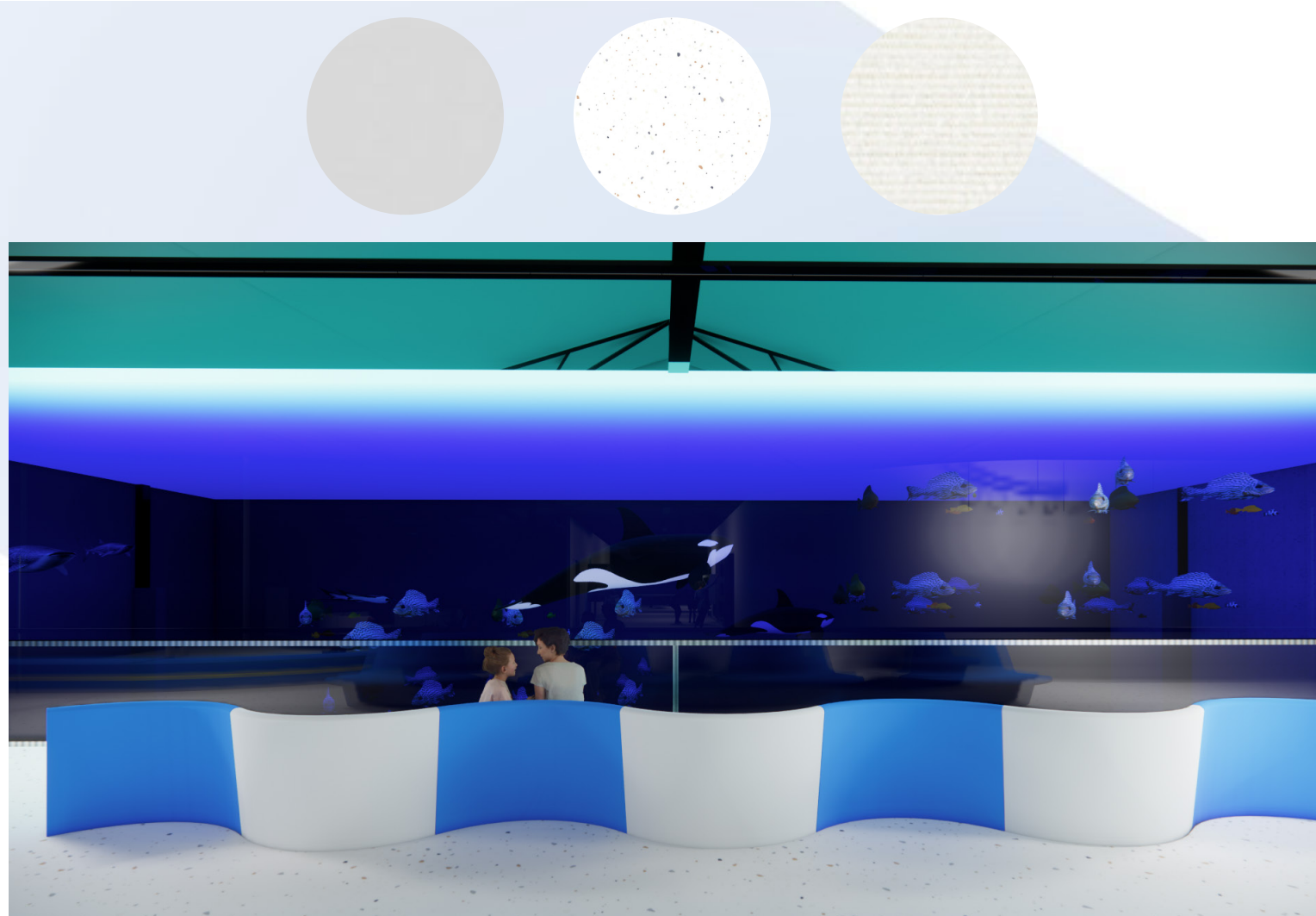
**EDUCATIONAL HALLWAY**

Different types of information wall & fun installations for people to play with, for children to explore new informations about the ocean situation & ocean lives.



**MULTIFUNCTIONAL ROOM**

The multifunctional room with a glass wall, is places in front of the first floor tank viewing point, this is designed to expand the view for people in the room.  
This room has enough space for approximately 30 people, with projection screen for a educational event ; and a large monitor to watch the vet next door



### **FIRST FLOOR VIEWING POINT**

The large wall tank area with a long bench allows another option for people to view the tank from the first floor to below